

Technical Data Sheet



Peter Kwasny GmbH, Heilbronner Str. 96
74831 Gundelsheim / Deutschland
Telefon: +496269 95-0, Fax: +496269 95-80
www.spraymax.com / www.kwasny.com / info@kwasny.de

SprayMax® **1K Guide coat 400 ml** **Art. Nr. 680100**



Product

Description / Purpose

This improves the efficiency of the sanding process and the paint result.

Properties

- Fine homogenous mist
- Even, thin wetting of surface
- Powder-like with good sanding properties
- No clogging of the sandpaper

Material base

Special physically-drying coating resins

Colour

Deep black

VOC Value (EU)

713 g/l

Substrate

Old paint and factory paint as well as dried and sandable surfaces i.E. putty, primer, filler (cleaned and sanded)

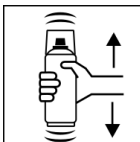
Processing

Protection measures



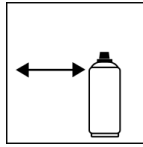
Wear personal protection equipment.
(respiratory mask/gloves/goggles)
For more information, see safety data sheet.

Shake



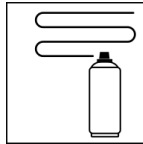
Shake can thoroughly for at least 2 minutes from when the mixing balls are heard.

Spraying distance



15 cm - 20 cm

Spray passes



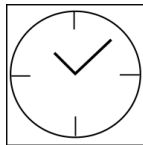
Apply one thin coat onto the surface that is to be sanded.

Processing conditions



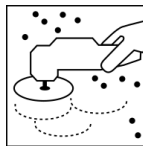
Optimum application at 18° C - 25° C and a relative humidity from 40 - 60 %.

Drying

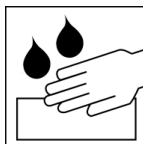


Ready for sanding: approx. 1 min

The stated values refer to the above-mentioned processing conditions. The level of dryness is determined pursuant to DIN 53150.



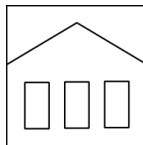
Dry sanding with P 350 - P 500



Wet sanding with P 400 - P 500

Additional Information

Shelf Life



60 months

The usage period refers to an unused can that is stored correctly at a temperature of 15 - 25° C and a relative humidity below 60%. The can must be stored and transported in an upright position in a dry place where it is protected against chemical and mechanical influences. The safety information on the can and all statutory provisions applicable for the storage site must be observed.

Disposal



The completely emptied spray cans must be disposed of in the recycling system. Cans with hardened material must be disposed of as special waste.

**Note**

For professional use only.

Identification, see safety data sheet.

The contents in this technical data sheet were created with great care and reflect our current state of knowledge. They provide the user with application-specific information and do not promise certain properties. The information is non-binding and we accept no liability for its integrity, accuracy and completeness. They do not relieve the user of their duty to check the suitability of our product for the intended purpose. The warnings printed on our labels must be respected. Our brands and patents are protected by copyright. All rights reserved We reserve the right to update, amend or supplement the content of the information without prior notice.