









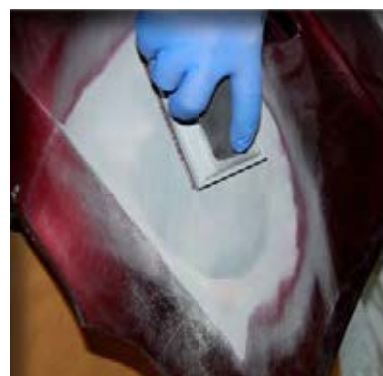
Tricel is a global provider of high performance solutions for the Water, Environmental, Construction and Materials industries. Our company ethos “Generations of Innovation” is built around three interlinking themes, Innovation, Quality & Heritage, which has been developed over the last 40 years. We deliver innovative quality solutions that our customers can trust. With manufacturing locations in 5 countries we possess a broad and distinct range of capabilities enabling us to supply a comprehensive range of products to over 50 countries worldwide.

With over forty years manufacturing experience, ProWorx customers can be assured they are buying the best premium bodyfillers on the market today.

CONTENTS

PRODUCTS

SWIFT	06
PEARL	07
ELITE	08
SILK	09
PLEX	10
FIBREFIX	11
FIBREKIT	12
FIBRE-RES, FIBRECAT, FIBREMAT	13
ANCILLARIES	16



STEP BY STEP

Plastic repair	18
Fibreglass bridging repair	20
Bulk filler repair	22
Finishing filler repair	24



SWIFT



Extra smooth lightweight bodyfiller

ProWorx Swift is an extremely versatile bodyfiller which can be used on a variety of substrates. Swift is an extra smooth easy sand bodyfiller which saves time and effort. It is ideal for larger repairs and provides great adhesion. The curing process can be accelerated with the use of Infrared.

A plastic flat front edged applicator and hardener is provided with each of our Swift kits.

Swift is available in kit sizes: 0.6L and 3.5L.



Part number / Code	Size	Barcode	Ctn
PROSW1	0.6L	5391519120354	8
PROSW4	3.5L	5391519120361	3

PEARL



Ultra-lightweight premium bodyfiller

ProWorx Pearl has been specifically formulated and designed to combat the challenges of a modern repair. It is ultra-lightweight with great structure, which means it spreads really easily but gives great build characteristics. Pearl's outstanding sand-ability means a faster easier repair for reduced key to key time.

For even faster drying time Pearl can be used with gas catalytic drying systems such as (Robotica and SYMACH) as well as conventional Infrared systems.

Pearl is available in kit sizes: 2.5L and 1.3L dispenser.



Part number / Code	Size	Barcode	Ctn
PROPL3	2.5L	5391519120996	4
PROPL5	1.3L	5391519121177	12

ELITE



Superfine premium grade bodyfiller

ProWorx Elite is suitable for all common substrates including mild steel, aluminium, galvanised steel and GRP including SMC. This makes Elite an extremely versatile bodyfiller to work with, curing times can be accelerated with the use of Infrared. It is very easy to mix and apply thanks to its fine creamy texture. Elite can also be used as a finishing stopper thanks to its smooth finish.

A plastic flat front edged applicator and hardener is provided with each of our Elite kits.

Elite is available in kit sizes: 0.6L, 1.1L and 2.1L.

Part number / Code	Size	Barcode	Ctn
PROEL1	0.6L	5391519120477	8
PROEL2	1.1L	5391519120330	8
PROEL3	2.1L	5391519120347	4



SILK



Finishing glaze bodyfiller

ProWorx Silk is suitable for most common substrates including steel, aluminium, galvanised steel and glass fibre. It provides excellent adhesion and is very easy to sand once cured. Silk has excellent flowable qualities which make it easy to spread onto the repair area. It is ideal as a finishing grade filler prior to painting.

A plastic flat front edged applicator and hardener is provided with our Silk kits.

Silk is available in kit size: 0.6L.



Part number / Code	Size	Barcode	Ctn
PROSK1	0.6L	5391519120460	8

PLEX



Flexible plastic repair bodyfiller

ProWorx Plex is both flexible and versatile when it comes to plastic repairs. It has a high degree of adhesion for modern types of plastic. Great spreadability for a smoother finish and easy sanding for quick repairs.

A plastic flat front edged applicator and hardener is provided with our Plex kits.

Plex is available in kit size: 0.6L.



Part number / Code	Size	Barcode	Ctn
PROPX1	0.6L	5391519120620	8

FIBREFIX



Premium grade Fibreglass bodyfiller

ProWorx Fibrefix is a premium glass filled bodyfiller with excellent repair properties for bridging holes and rust. Filled with short strands of fibreglass, its ease of application makes Fibrefix ideal for small and large repairs.

A plastic flat front edged applicator and hardener is provided with each of our Fibrefix kits.

Fibrefix is available in kit sizes: 0.6L, 1L and 1.85L.



Part number / Code	Size	Barcode	Ctn
PROFF1	0.6L	5391519120378	8
PROFF2	1L	5391519120385	8
PROFF3	1.85L	5391519120392	4

FIBREKIT



Professional GRP repair kit

ProWorx Fibrekit is the complete construction/repair process for any small, medium or major glass reinforced plastic (GRP) application. It is permanent, resilient and waterproof. It is also quick and easy to use.

Fibrekit comes complete with;

- 1 x 1kg Resin
- 1 x 0.45kg 450g Glass
- 1 x 25ml Catalyst
- 1 x 2" Brush
- 2 x Latex gloves (a pair)
- 1 x 30ml Measure cup
- 2 x Mixing stick
- 1 x 32 oz. Mixing cup

All contained in a 6L black plastic bucket.



Part number / Code	Size	Barcode	Ctn
PROFK1	1m²	5391519121443	1

FIBRE-RES, FIBRECAT AND FIBREMAT



Fibre-Res

ProWorx Fibre-Res is our low styrene emitting Lloyds approved Polyester Resin with fast glass wet out and low exotherm characteristics when used with our high quality fibreglass matting. It is ideally suited to larger automotive GRP repairs and being Lloyds approved it is also suitable for marine use, boat repair and maintenance.

FibreCat

ProWorx FibreCat is our MEKP catalyst which is mixed with our Fibre-Res, this initiates the curing reaction turning the liquid into a solid, durable material.

FibreMat

ProWorx FibreMat is our high quality 450g fibreglass mat which is used in hand layup repair. When used in conjunction with our Fibre-Res polyester resin it produces a strong, stiff and tough laminate automotive repair solution.

Part number / Code	Size	Barcode	Ctn
PRORS5	5L	5391519121450	2
PROFC10	100ml	5391519121498	10
PROFM5	450g/5m²	5391519121467	5



LIGHTWEIGHT
SWIFT
BODY
FILLER

SUITABLE FOR
ALUMINIUM
MILD STEEL
GALVANISED STEEL
GRP

ULTRA
LIGHTWEIGHT
PEARL
BODY
FILLER

PROWOL

WORX
AL'S CHOICE

NET VOLUME
1.3L e



ULTRA
LIGHTWEIGHT
PEARL
BODY
FILLER

ANCILLARIES



Mixing boards

The ProWorx filler mixing boards are constructed from a smooth, strong, durable plastic and are designed to be a re-usable.

Hardeners

The ProWorx hardeners are specifically designed to compliment our filler range, giving excellent curing performance consistently.

Applicators

The ProWorx applicators come in a various spreader size packs of 3 to give maximum versatility. Our packs of ten have high quality mainstream regular flat fronted applicators enclosed.

Filler dispenser unit

Our ProWorx filler dispenser unit is ergonomically designed for either wall mounting or mobile work station use. With a fixed ratio mechanism it is both robust and versatile giving consistently accurate applications.

Part number / Code	Size	Barcode	Ctn
PROAP1	S,M,L	5391519120408	20
PROAP2	Unit	5391519120415	10
PROAP4	Unit	5391519121474	1
PROHA1	25ml	5391519120422	20
PROHA2	40ml	5391519120439	20
PROHA3	45ml	5391519121481	12
PROB01	Unit	5391519120446	1
PROB02	Unit	5391519120453	10



ProWorx

The Professional's Choice

STEP BY STEP



ProWorx - The Professional's Choice

Plastic repair



STEP BY STEP

PLASTIC REPAIR

Plex plastic filler process provides a solution for repairing anything from cracks and holes to minor abrasions in most types of automotive plastic parts and is perfect for plastic bumpers.

Plex provides great flexibility and durability which makes repairing plastics exceptionally quick and easy, it provides a high quality, long lasting efficient repair.



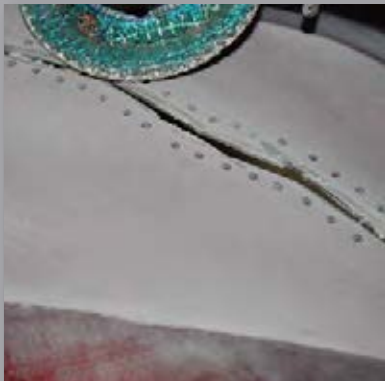
1 Clean and degrease the area to be repaired on the front and reverse.



2 Remove all the paint in the affected area with a DA sander using a P120/P180 grit disc.



3 Drill a hole approximately 3mm at the end of the split to relieve the chance of further cracking/splitting.



4 Drill a number of 3mm holes either side of the repair (this is known as shoe lacing). Then using a die grinder/file grind a "V" shaped channel into the repaired area. Key the back of the plastic in the area to be repaired.



5 Take a piece of fabric webbing material and cut to the approximate size of the repair.



6 Degrease both sides and apply a thin layer or coating of adhesion promoter.



7 Mix the appropriate amount of Plex filler with hardener at a ratio of 2% at an ambient temp of 20°C.



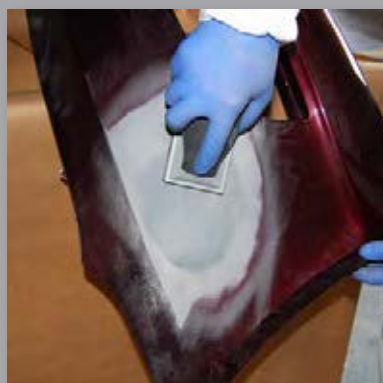
8 Apply the Plex to the fabric webbing and then apply with a firm even pressure to the reverse of the repair area.



9 Take the applicator supplied and spread the Plex smoothly on the outer repair surface.



10 Once cured, apply dry powder guide coat.



11 Block sand with either a P120 or a P180 feathering out with a P320 to finish.

Note: If further applications are required please repeat steps 7 through 11, omitting step 8.

ProWorx - The Professional's Choice

Fibreglass bridging repair



STEP BY STEP

FIBREGLASS BRIDGING REPAIR

Fibrefix bridging repair filler gives great strength and durability with the added bonus of being waterproof. Applications vary from automotive to marine, industrial or commercial. The versatility of Fibrefix is ideal for small to medium repairs.



1 Clean and degrease the area to be repaired.



2 Remove all the loose/fractured particulate and paint from the affected area with a DA sander using a P80 grit disc.



3 Cut a piece of Aluminium mesh to the approximate size of repair. Secure the mesh in place ready for the filler application.



4 Once the area has been prepared, mix your FibreFix filler with hardener at a ratio of 3% at an ambient temp of 20°C.



5 Then apply your full coat of filler with the applicator provided making sure that firm and even pressure is being applied.



6 Once cured sand with a P40 or P80 to achieve general shape.



7 Once the area has been prepared mix your ProWorx filler with hardener at a ratio of 2% at an ambient temp of 20°C.



8 Then apply a full coat of ProWorx bulk filler with the applicator provided making sure that firm and even pressure is being applied.



9 Once cured apply dry powder guide coat.



10 Block sand with either a P80 or a P120.



11 Feather out repair with P320.



12 Final inspection ready for next application process.

Note: If further applications are required please repeat steps 7 through 11.

ProWorx - The Professional's Choice

Bulk filler repair



STEP BY STEP

BULK FILLER REPAIR

When it comes to a mainstream bulk filler repair the choice is yours. Both Swift and Pearl provide the answer. Whether it is mild steel or GRP or whether it is more advanced substrates like aluminium or galvanized panels these ProWorx products have it covered. Follow our step by step guide to ensure you achieve a professional finish every time.



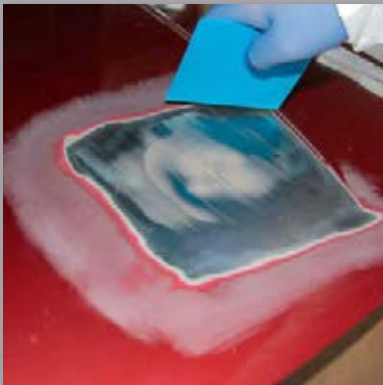
1 Clean and degrease the area to be repaired.



2 Remove all the paint in the affected area with a DA sander using a P80 grit disc.



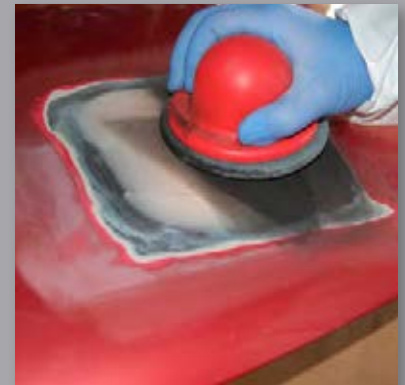
3 Once the area has been prepared mix your ProWorx filler with hardener at a ratio of 2% at an ambient temp of 20°C.



4 Apply and remove a thin film of ProWorx filler (Known as a wetting up coat), mix the removed product back into your existing filler.



5 Apply your full coat of filler with the applicator provided making sure that firm and even pressure is being applied.



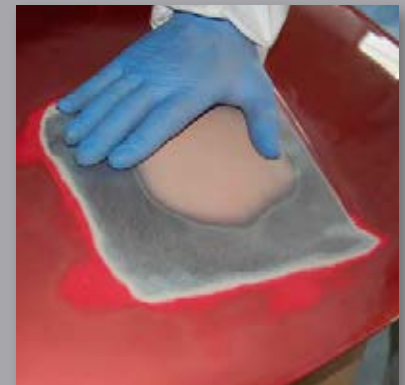
6 Once cured apply dry powder guide coat



7 Block sand with either a P80 or a P120.



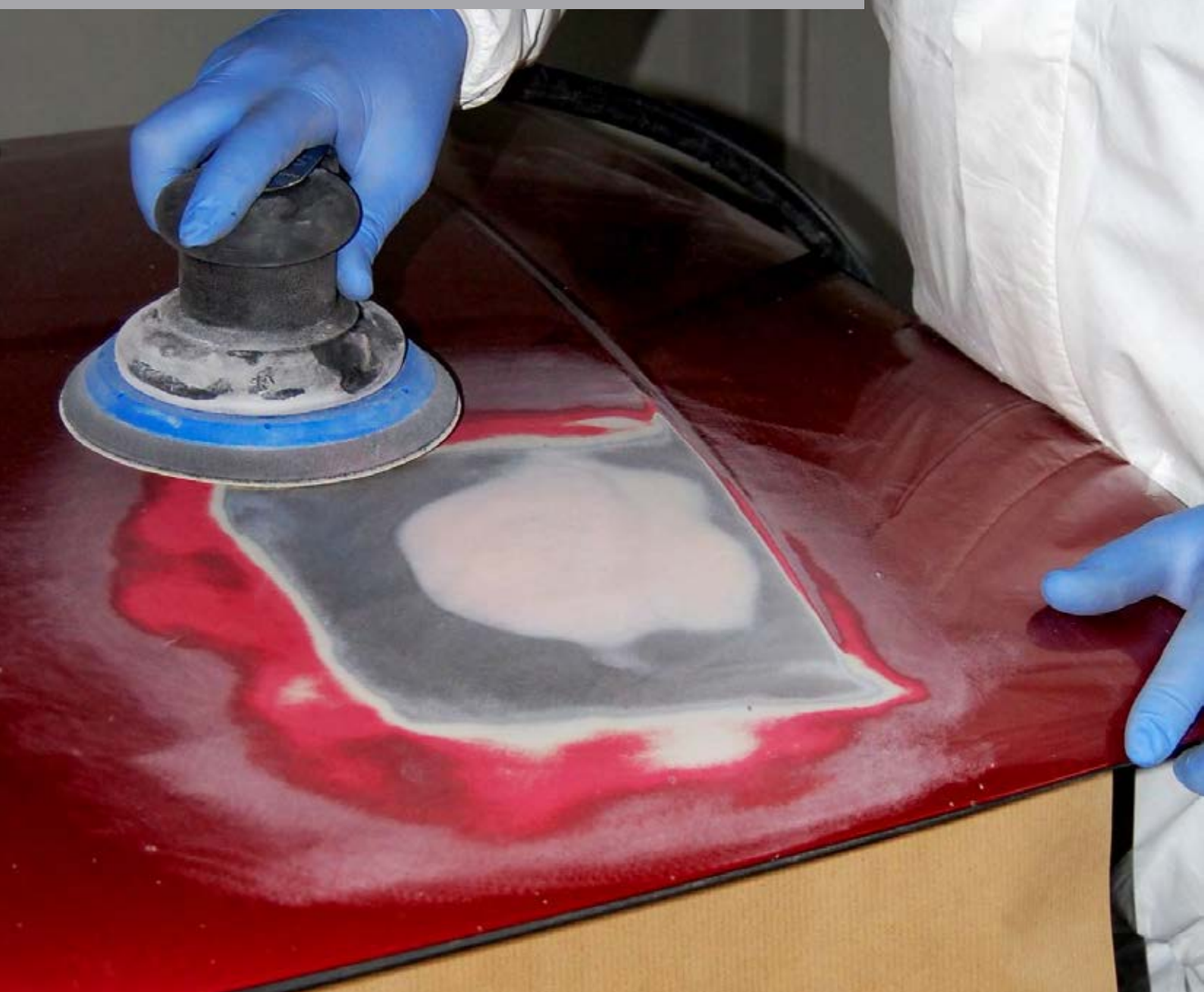
8 Feather out repair with P320.



9 Final inspection ready for next application process.

ProWorx - The Professional's Choice

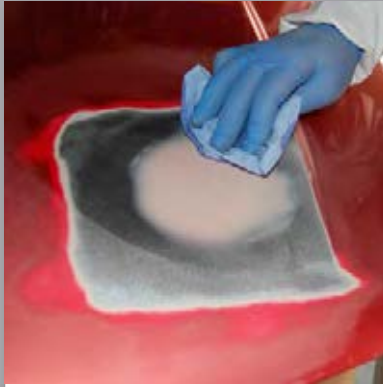
Finishing filler repair



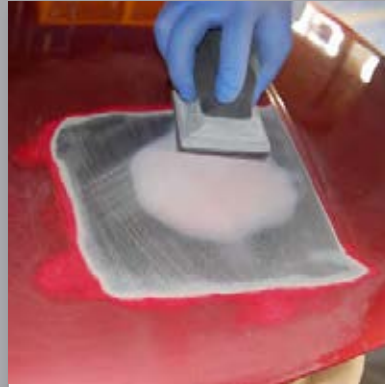
STEP BY STEP

FINISHING FILLER REPAIR

For the finishing touches use Elite or Silk. They provide a super smooth finish every time. Ideal for when you have just completed a big repair and you want to remove those minor imperfections. Easy to apply and easy to sand.



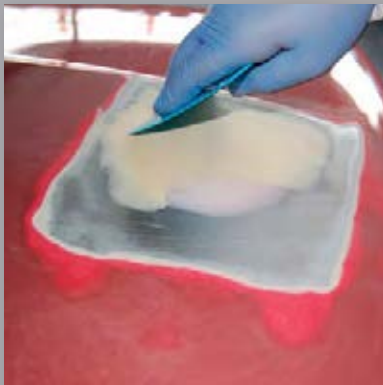
1 Clean and inspect repair area.



2 Lightly sand surface with a P180 if required.



3 Mix the appropriate amount of ProWorx finishing filler at a ratio of 2% at an ambient temperature of 20°C.



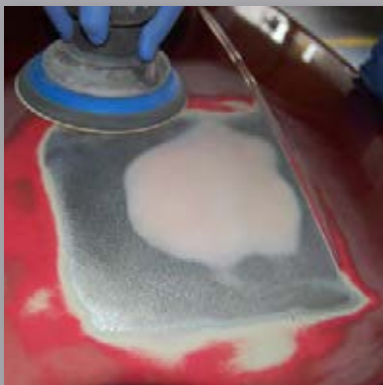
4 Apply the filler with the applicator provided making sure that firm and even pressure is being applied.



5 Once cured apply dry powder guide coat.



6 Block sand with either a P120 or a P180.



7 Feather out repair with P320.



8 Final inspection ready for primer application process.

Dewey Waters Ltd.
Heritage Works, Winterstoke Road, Weston-super-Mare, BS24 9AN, United Kingdom.
Tel: +44 (0) 1934 422311
email: sales@proworx.eu
www.proworx.eu







Dewey Waters Ltd. Heritage Works | Winterstoke Road | Weston-super-Mare | BS24 9AN | United Kingdom.
Tel: +44 (0) 1934 422311 | email: sales@proworx.eu | www.proworx.eu

In accordance with normal policy of product development these specifications are subject to change without notice.