

A man with short, graying hair and a beard is shown in profile, looking down at a spray gun he is holding. He is wearing a black jacket with red accents and a red SATA logo on the chest. The spray gun is black with a red trigger and a brass nozzle. He is standing next to a dark-colored car, and his left hand is raised towards the car's side mirror. The background is blurred, suggesting an outdoor setting. The SATA logo is prominently displayed in the top right corner.

SATA

jet X. Works for you.

A thin red vertical line is positioned at the bottom left of the frame, extending from the bottom edge towards the middle of the image.

Creating a flawless paint finish is a demanding task. It requires skill, experience and a great deal of dedication.

It is a job for professionals.

With the jet X, we have designed the ideal tool for the job. A spray gun that helps you achieve the highest quality - and makes it easier than ever before. A piece of equipment into which all our experience as well as the feedback of the painters have been incorporated.

The spray gun that works for you.



It's a SATA.

In our latest development, we have further refined what has characterised our products for decades: the nozzle technology. The jet X also comes with completely new digital functionality. And a completely new shape - but one that is still characteristically SATA.

The advantages

It has never been so easy to achieve such good results.

The nozzle system is the centrepiece of the spray gun. It is decisive for the final result. It is what makes the difference - between good and outstanding.

The nozzle concept of the jet X is based on the innovative labyrinth airflow system. It guides the air in the nozzle in such a way that it exits each orifice at exactly the same pressure and free of turbulence and pulsation. This enables us to achieve exceptionally fine and homogeneous atomisation - and a new level of surface quality, both for HVLP and RP technology.

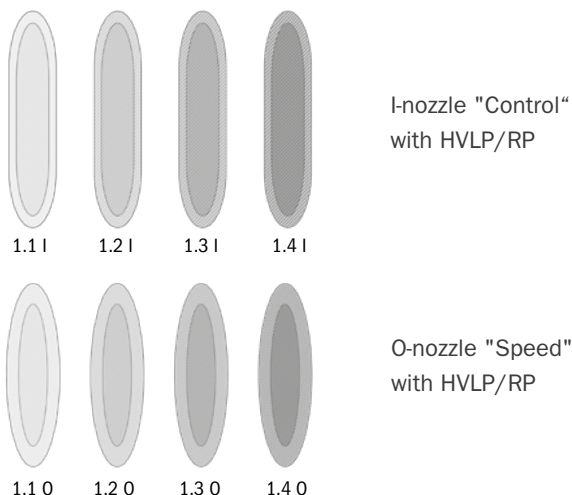
The spray pattern remains absolutely uniform over its entire height. It has clearly defined fade-out zones and is easy to

handle - for a controlled and immediate application feel.

Cloud formation and flow disturbances in the basecoat are minimised, while the finer atomisation in the clearcoat results in perfect wetting and better surface quality. Even with more difficult materials, such as metallic paints, the jet X delivers convincing results across the board.

This is what we mean when we say: This gun works for you. For professionals it has never been so easy before.

I/O = Control and Speed



The jet X nozzles are available in two fan shapes:

The "I", or "Control", nozzles produce a longer spray pattern with an even material distribution. They have a slower application speed but offer maximum control.

The "O", or "Speed", nozzles have an oval fan shape with a larger fade-out zone and a wetter core, which results in a higher application speed.

This means that every painter can choose the nozzle system that suits their own preferences and application technique.

Regardless of which nozzle type is selected, the respective fan dimension remains constant across the different nozzle sizes. Only the material throughput changes linearly with the size.



Looks good for you: the design

With its matt black exterior and red accents, the jet X shows that style and hard work can certainly go hand in hand. It also marks the beginning of a new design era at SATA.

Balanced - in every respect

The jet X DIGITAL ready is approx. 50 grams lighter than its predecessor, the SATAjet X 5500. The ergonomic gun body sits comfortably in the hand and is balanced so that it does not become top-heavy even with a large filled cup.

Easy to clean: the detachable trigger

The trigger made of technical polymer can be removed in one easy step - without tools and without snap rings. This makes maintenance easier and cleaning more thorough. Clever additional benefit: the integrated tool can be used to loosen or tighten the fluid tip.

3 in 1: the innovative air inlet

The air micrometer for setting the dynamic inlet pressure is located at the air inlet. It allows convenient and precise adjustment of the air pressure. The practical swivel joint is also integrated.



INFO
www.sata.com/jetx

The most digital SATA of all time



jet X BASIC* - The entry level into the X Dimension

The jet X is available in four versions. The jet X BASIC is the basic analogue version - with all the advantages of the nozzle technology and ergonomics, but without the option of digitalisation with an adam X or an adam X pro. Digital pressure measurement can be retrofitted to the air inlet with the SATA adam 2 U.

jet X DIGITAL ready - Get ready for all options

The jet X digital ready is optimally prepared for digitisation with the SATA QAC (Quick Adam Connector). An adam X or adam X pro can be connected directly to the spray gun without a docking station. Do you want your jet X to remain an analogue spray gun as standard? In that case, you can use a QAC cover with hand rest to replace the adam X and ensure ideal ergonomics.

jet X DIGITAL - All parameters at a glance

In addition to the nozzle technology and ergonomics, the jet X DIGITAL also features other innovative features that contribute to convenience and process reliability.

The adam X digital unit offers various basic digital functions that make the professional's everyday life in the paint booth easier. For example, the inlet pressure is displayed in large and easy-to-read digits. This makes setting the correct pressure much easier. The display can be switched from bar to psi. In addition, the adam X displays the ambient temperature - an important parameter, especially as it measures the temperature where it matters: in the paint booth. The adam X also displays the operating time and battery status. Practical feature: the display is controlled by double-tapping, which is convenient even when wearing gloves.

jet X DIGITAL pro - For anyone who desires the maximum

The jet X DIGITAL pro offers the full range of digital functions. Its digital unit, the adam X pro, helps the painter analyse and control the painting process. In line with the "works for you" principle, it therefore helps to optimise results.

The main screen of the adam X pro shows the dynamic inlet pressure - and much more: It also displays any deviations from the target pressure that has been set. If this deviation exceeds 0.2 bar, an optical alarm is triggered.

In this way, jet X DIGITAL pro plays an important role in avoiding costly errors. This is because a pressure deviation of just 0.2 bar can lead to changes in the colour effect of metallic and Three Stage Pearl.

The adam X pro also provides information on the ambient temperature and battery status. The digital unit also keeps precise records of operating hours, painting time and the number of trigger pulls, i.e. how often the trigger was actuated.

The various functions of the digital unit are called up and selected by double-tapping as well as by tilting the gun.

Once a job has been completed, the adam X pro generates a summary of the selected settings and values. This data can be transferred to a digital dashboard on a PC or smartphone - perfect for monitoring and analysing the painting process. The data is transmitted to the dashboard via a specially generated QR code on the display of the adam X pro.

By making the painting process so transparent and easy to monitor, we give painters the greatest possible control over the settings of their spray gun and their influence on the final result. For maximum process reliability and reproducibility. Simply put, it's a good feeling to have the data in front of you and all the important settings under control. Because the jet X DIGITAL pro helps achieve the best results and avoid painting errors.

The adam X pro is very easy to attach and remove - without a docking station or adapter. The parameters can be analysed for two jet X spray guns.

* Not available in DE, AT, BE, NL, LU, CH Operating time = adam X pro is switched on, although it may not actively be painted / Application time = number of hours of active painting (trigger being pulled)



	jet X BASIC*	jet X DIGITAL ready	jet X DIGITAL	jet X DIGITAL pro
Innovative labyrinth airflow system	X	X	X	X
Two fan shapes: I-nozzle: control / O-nozzle: speed	X	X	X	X
Air inlet with swivel joint and air micrometer	X	X	X	X
Removable trigger with tool for the fluid tip		X	X	X
QAC (Quick Adam Connector)		X	X	X
Basic configuration		adam X/X pro retro- fittable	adam X	adam X pro
Inlet pressure indicator		(1) (2)	X	X
Conversion bar/psi		(1) (2)	X	X
Target pressure input		(2)		X
Alarm function for when system exceeds or falls below the target pressure		(2)		X
Alarm when ambient temperature falls below 20 de- grees and exceeds 30 degrees		(2)		X
Operating time indicator		(1) (2)	X	X
Ambient temperature indicator		(1) (2)	X	X
Conversion °C/°F		(1) (2)	X	X
Battery status indicator		(1) (2)	X	X
Double-tap operation		(1) (2)	X	X
Tilt operation		(2)		X
ePaper display		(2)		X
Data on operating hours, painting time and number of trigger pulls		(2)		X
Uploading important parameters to the digital dash- board		(2)		X

* Not available in Germany, Austria, Belgium, Netherlands, Luxemburg, Switzerland

(1) adam X (2) adam X pro

I-nozzle				
	1,1	1,2	1,3	1,4
DIGITAL pro				
RP	1200310	1200394	1200477	1201988
HVLP	1200039	1200112	1200196	1201946
DIGITAL				
RP	1200302	1200386	1200469	1201970
HVLP	1200021	1200104	1200188	1201938
DIGITAL ready				
RP	1200328	1200401	1200485	1201962
HVLP	1200047	1200120	1200203	1200542
Nozzle set				
RP	1203992	1204015	1204031	1204073
HVLP	1204007	1204023	1204065	1204081

O-nozzle				
	1,1	1,2	1,3	1,4
DIGITAL pro				
RP	1200352	1200435	1200518	1200576
HVLP	1200071	1200154	1200237	1200279
DIGITAL				
RP	1200344	1200427	1200500	1200568
HVLP	1200063	1200146	1200229	1200261
DIGITAL ready				
RP	1200360	1200443	1200526	1200584
HVLP	1200089	1200162	1200245	1200287
Nozzle set				
RP	1203869	1203885	1203900	1203926
HVLP	1203877	1203893	1203918	1203984

10X40	
DIGITAL pro	
RP	1215583
DIGITAL	
RP	1215608
DIGITAL ready	
RP	1215591
Nozzle set	
RP	1215624

The jet X in detail



* Not available in Germany, Austria, Belgium, Netherlands, Luxemburg, Switzerland

In the jet X, we have invested all our expertise in developing a very special spray gun. Setting the standard in the Premium class. But with a tool like this, it's the feel and personal impression that count.

That's why the best thing is to experience it for yourself. At an appointment with our sales representatives, at a trade fair - and, of course, in specialist stores. You can find a list of dealers at sata.com under Service/Distribution partner search.

More information
sata.com/jetx





A digital world for jet X.

adam X und adam X pro



A digital unit with special capabilities.

Perfect for you.

The jet X is the most advanced spray gun from SATA. With its innovative nozzle concept, it achieves a new outstanding surface quality for basecoats and clearcoats. It helps you achieve better finishes more easily.

The digital units of the adam X series allow you to standardise and reproduce these results at a high level.

With their diverse functions, they support you in making processes transparent and avoiding errors.



adam X and adam X pro for the use on the jet X DIGITAL ready

Equipped with the QAC, the Quick Adam Connector, it is the basic model for the use of the digital units.

Or you can decide in favour of the digital options straight away: for spray guns that are already equipped with these useful digital features as standard - the jet X DIGITAL and jet X DIGITAL pro.

The adam X



The adam X is SATA's entry version into the new digital world of painting. It is particularly compact and clearly laid out - and is particularly suitable for those who primarily want to use the basic functions.

The adam X displays the inlet flow pressure, the ambient temperature, the operating time and the battery status. The menu items are selected with a tap on the housing. This is simple and practical, even with gloves. The slim digital unit is easy to mount on the jet X with a quarter turn. A docking station is not required.

Dynamic inlet pressure

Digital and precise. The adam X displays the dynamic inlet pressure - and the reading can be switched between bar and psi. This makes it easy to set the pressure precisely using the air micrometer on the air inlet and keep an eye on the adam X.



Ambient temperature

The adam X shows the exact temperature in the paint booth - the place where it matters most. The display can be switched from °C to °F.



Operating time

How many hours has the spray gun or nozzle set been in operation? The adam X keeps track - and tells you when it may be necessary to change the nozzle set.



Battery status

The adam X is extremely economical with its battery - nevertheless, it cannot hurt to keep an eye on its battery level every few weeks. The adam X indicates battery level as a percentage.



The adam X pro



The adam X pro offers an unprecedented range of digital functions. This helps the professional in the paint booth analyse and control the painting process - with an unrivalled level of information and accuracy.

This is far more than just “luxury”: data analysis helps the painter to improve. It helps to optimise results and avoid painting errors such as uneven material distribution and cloud formation thanks to precisely reproducible parameters.

The operation of the device follows a concept that was developed with the conditions in the paint booth in mind. It is completely new - but you can familiarise yourself with it in just a few minutes: the various functions are selected by double-tapping the side of the housing or by tilting the gun.

The adam X pro is mounted straight on the jet X with a quarter turn - without a docking station or adapter. The parameters can be analysed for up to two jet X spray guns.

The functions of the adam X pro

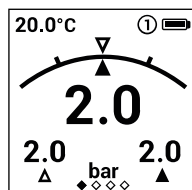
The menu structure is orientated towards the needs of professionals who work with the jet X on a daily basis. It is divided into two levels: the first level shows the main screen - it is always the first screen to appear after activating the adam X pro. Also on the main level: the statistics and the QR generator for transmitting data to the digital dashboard. The settings are found on the second level.

The main level

The most important values at a glance: the main screen

The main screen shows the most important parameters in a clearly organised display:

- The current actual pressure
- The previously set target pressure
- Deviations between actual and target pressure in a graphical visualisation



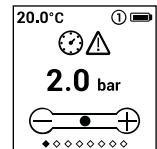
- An alarm symbol if the actual and target pressure differ by more than 0.2 bar (3 psi)
- The dynamic pressure that was applied when the trigger was last actuated
- Also: The ambient temperature and battery status

During painting, the display changes to a simplified, clearer display.

The settings level

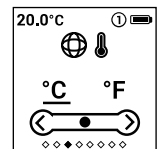
Target dynamic pressure

What specifications does the paint manufacturer provide? What are your personal preferences? The target value for the dynamic inlet pressure is set here. This value is also displayed on the main screen, shown in comparison with the actual pressure in a graphical visualisation. Deviations of more than 0.2 bar trigger an optical alarm.



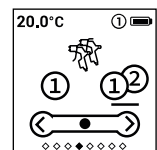
Pressure and temperature units

The pressure and ambient temperature displays can be easily switched: from bar to psi and from °C to °F.



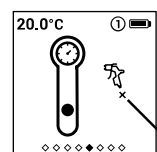
Multi-gun mode

The adam X pro can be used with two spray guns. When multi-gun mode is activated, a menu appears when the compressed air hose is connected in which the spray gun currently in use can be selected.



Other settings

Other functions can also be found at the settings level: calibration of normal pressure, information on hardware and software versions and resetting the statistics.





The statistics

The adam X pro keeps precise records of operating hours, painting time and the number of trigger pulls, i.e. how often the trigger was actuated.

The digital dashboard

The best database only makes sense if it is also analysed. To make this easier, the adam X pro can be connected to a personal dashboard on a PC or smartphone. This is a digital control centre in which the most important parameters of the painting process can be stored and analysed. The data is transmitted via a QR code that is shown on the display of the adam X pro.

Additionally, with each scan you can also profit from our SATA Loyalty Program.

adam X and adam X pro in comparison

	adam X	adam X pro
Mounting on the QAC without docking station	X	X
Inlet pressure indicator	X	X
Conversion bar/psi	X	X
Target pressure input		X
Alarm function for when system exceeds or falls below the target pressure		X
Alarm when ambient temperature falls below 20 degrees and exceeds 30 degrees		X
Gun operating time indicator	X	X
Ambient temperature indicator	X	X
Conversion °C/°F	X	X
Battery status indicator	X	X
Double-tap operation	X	X
Tilt operation		X
ePaper display		X
Data on operating hours, painting time and number of trigger pulls		X
Uploading important parameters to the digital dashboard		X

Expand your possibilities.

Further information at sata.com/adamxpro and from specialist retailers. You can find a list of dealers at sata.com under Service.





SATA. Passion for painters.



SATA GmbH & Co. KG
Domertalstrasse 20
70806 Kornwestheim
Germany
Tel.: +49 7154 811-200
Fax: +49 7154 811-194
E-Mail: export@sata.com
www.sata.com